



How Does It Work?

- ❖ Kernel-level driver loads before Windows
- ❖ Not an imaging solution
- ❖ Unrestricted user environment
- ❖ Guaranteed not to interfere with applications

Absolute System Integrity

- ❖ Deep Freeze instantly protects and preserves baseline computer configurations.
- ❖ No matter what changes a user makes to a workstation, simply restart to eradicate all changes and reset the computer to its original state - right down to the last byte.
- ❖ Over 10 years and 5+ million licenses deployed worldwide

Awards



Customer Testimonials

"Most people only respond when they are unhappy with a particular product. I thought I would take the time and say thank you for such wonderful software such as Deep Freeze Enterprise. I have been using the software for about a year and a half now and on the one hundred something computers it is installed on, not one has a single virus or spyware problem. Thank you for all the time you have saved me."

- *Daniel Harrison, Williamson County Library, TN*

"I have had teachers near retirement tell me they were ready to call it quits because of erratic and inconsistent computer software. Not until after last summer when Deep Freeze was installed did they finally remember why they liked to teach. Computer issues sometimes used as much as 20 minutes of a teacher's 45 minute period before Deep Freeze was deployed."

- *Chuck Taylor, San Juan Unified School District, CA*

Patron Privacy

Every FedEx Kinko's nationwide uses Deep Freeze, partly to ensure patron privacy by providing every patron with an absolutely 'fresh' computer.

This is something that is unique to Deep Freeze and cannot be replicated by running scripts deleting temp, clearing history files or restricting the patron with group policy-like solutions.

Deep Freeze Is For Everyone – Big and Small



Correctional Service
Canada

Service correctionnel
Canada



BOMBARDIER



Versatility

'Out Of The Box' Usage Scenarios

- ❖ Computer & Training Labs
- ❖ Library Computers
- ❖ Kiosk & Shared Access
- ❖ Visitor's Center
- ❖ Community Club Computers
- ❖ Hotel/Resort Computers
- ❖ Notebooks on Loan
- ❖ "Set them and forget them"
Production Computers
- ❖ Employee computers where
everything is saved to the network

Customized Usage Scenarios

- ❖ Faculty & Staff Computers
- ❖ 1 to 1 Notebook Deployments
- ❖ Servers!
 - ❖ Dedicated Server Versions for Windows
2000 & Windows 2003 Server Operating
Systems
- ❖ A little more on True "Set it and forget it!"

The Deep Freeze Value Proposition

Deep Freeze earns its investment

❖ **Technical Support Savings**

- ❖ Save both time and money spent on IT support calls

❖ **Power Consumption Savings**

- ❖ Tangible financial and environmental energy savings

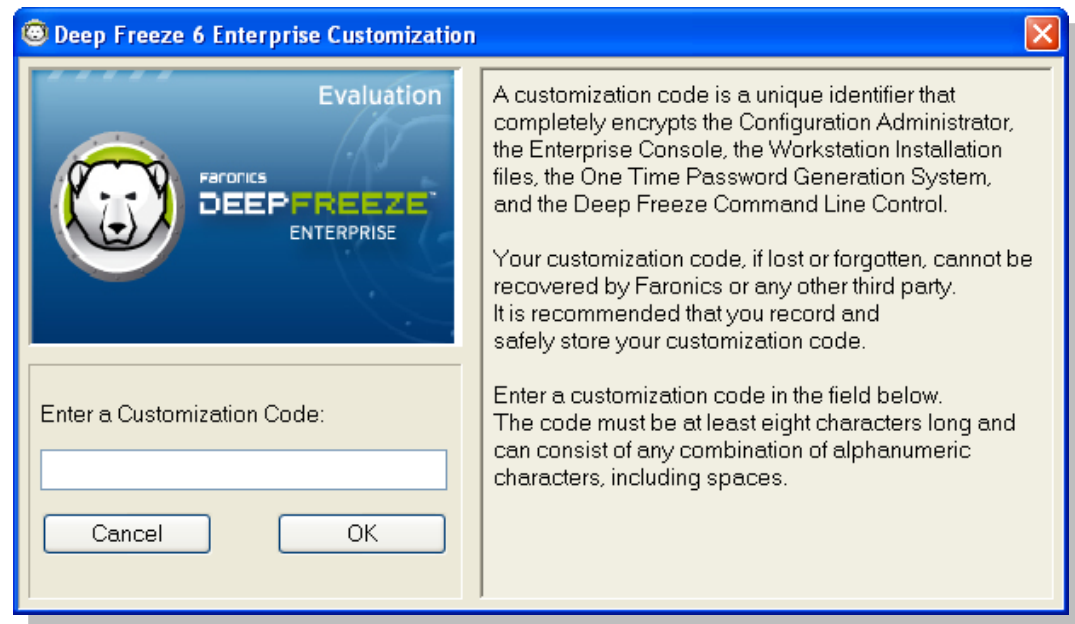
❖ **Educational/Productivity Benefits**

- ❖ Absolute protection assures maximum productivity and user satisfaction

Customization Code

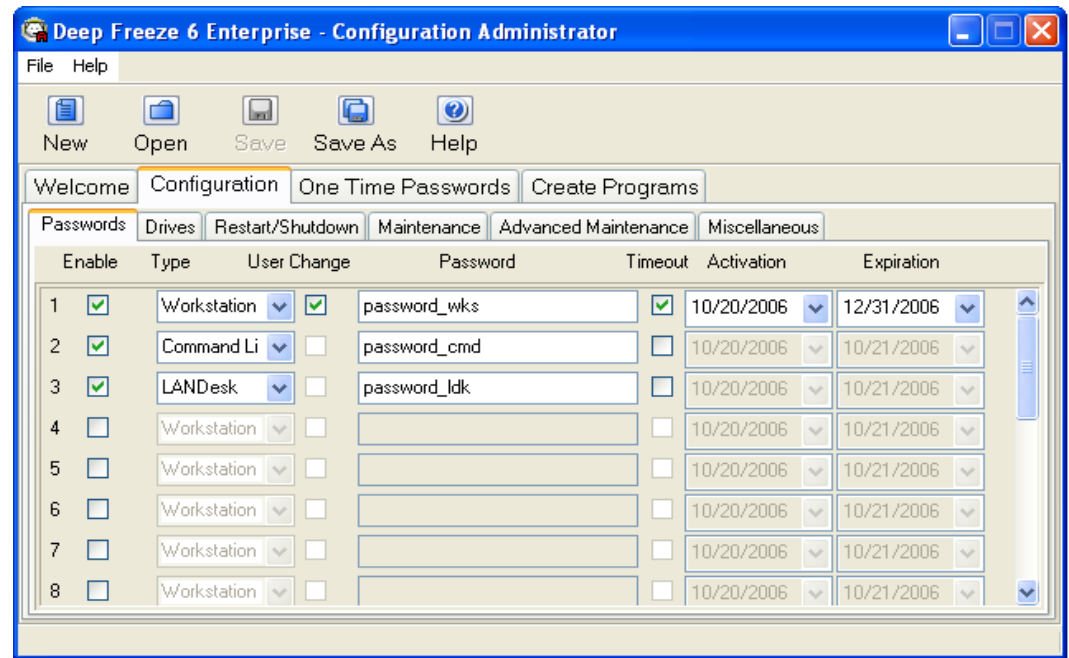
Using the same Customization Code throughout the entire organization can centralize the configuration and deployment of Deep Freeze. The Customization Code is a unique identifier that completely encrypts all the Deep Freeze components, such as:

- ❖ Configuration Administrator
- ❖ Enterprise Console
- ❖ Workstation Installation Files
- ❖ Workstation Seed
- ❖ Server Service Manager
- ❖ Command Line Control tool (DFC)



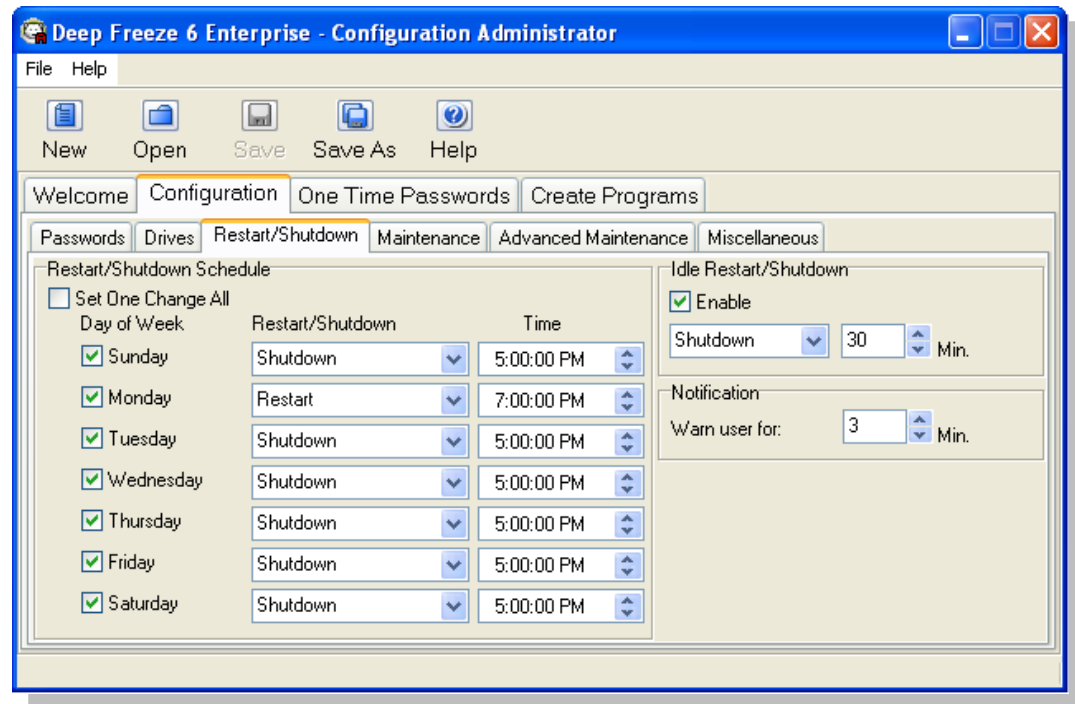
Password Management

- ❖ Only Deep Freeze provides such a powerful level of password management.
- ❖ Deep Freeze provides One Time Passwords which allow temporary and secure access to single protected workstations.



Power Savings

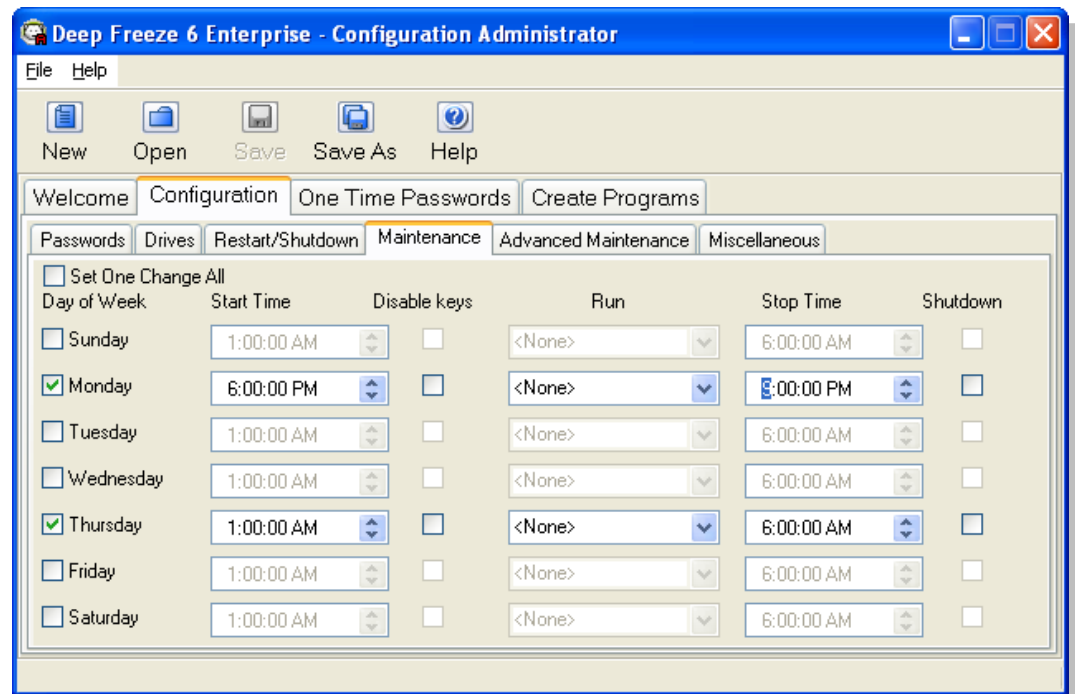
- ❖ IT will turn them off everyday & leave them on when required to do updates.
- ❖ Delta and Vancouver school districts in BC, Canada, reduced electricity use by over 2,974,280 kilowatt hours a year, worth \$179,000 in annual cost savings.
- ❖ Shutting down computers also reduces the amount of heat produced, decreasing the schools' cooling loads.
Full case study: BC Hydro Case Study
- ❖ Force a reboot every day to provide new users with the standard system configuration



Managing Changes

Maintenance Schedule

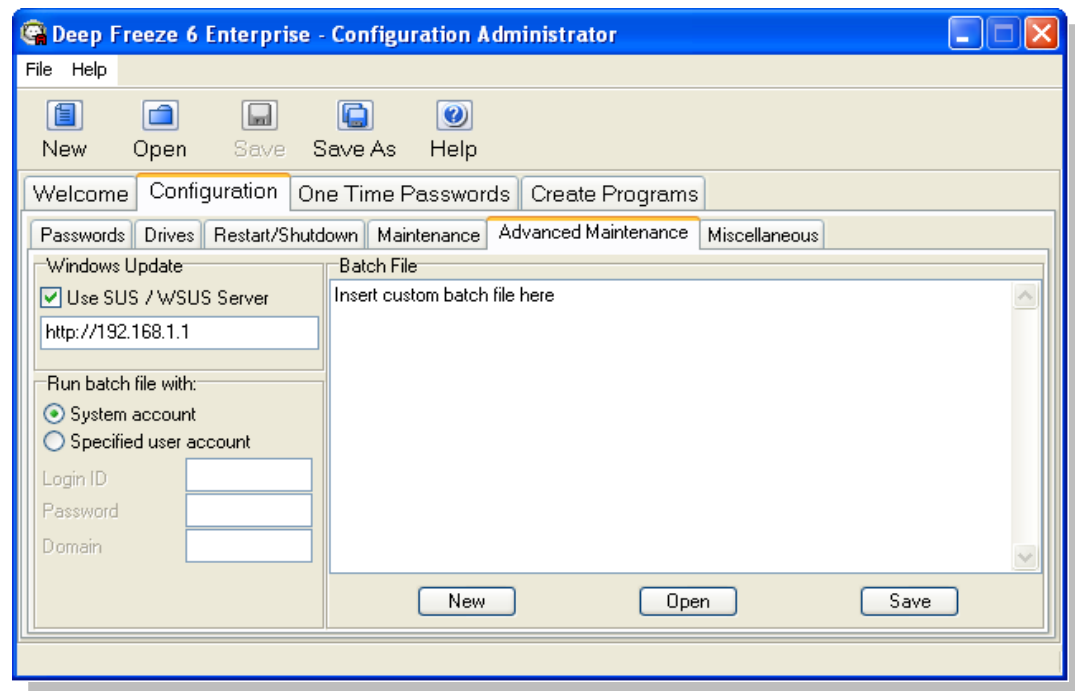
- ❖ Specify a maintenance time where permanent updates can take place.
- ❖ Includes anti-virus, third party software and Windows critical updates
- ❖ Run customized batch files
- ❖ Disable the keyboard and mouse while workstations are in maintenance mode



Product Configuration

Advanced Maintenance

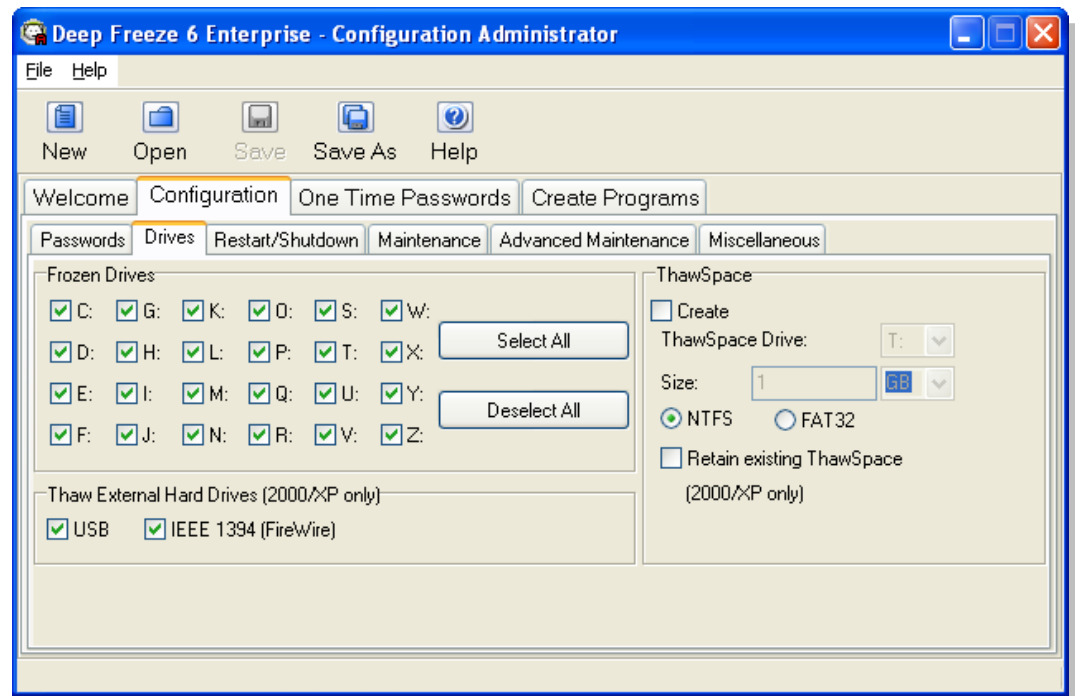
- Specify an internal SUS server for automatic Windows updates
- Load/Enter customized batch files for any maintenance task
- Run batch files with default local system privileges, or an account with network privileges



Product Configuration

ThawSpace

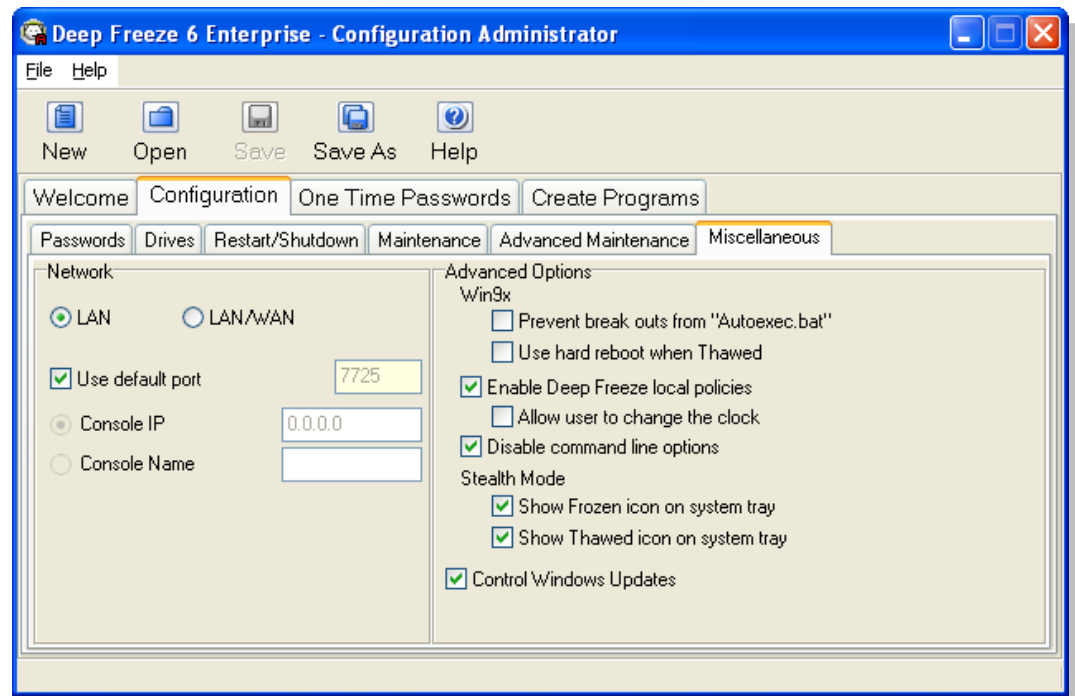
- ❖ To save large files (video production or CAD) locally you can employ the use of the ThawSpace to save files between reboots
- ❖ At times when the network is down or network storage is unavailable, ThawSpace can be used to save data permanently



Product Configuration

Network

- ❖ Select the communication protocol between the Enterprise Console and the workstations
- ❖ LAN (one subnet)
- ❖ LAN / WAN (used in complex topography, for remote control via the internet)



Installation Programs

Create Programs

- ❖ Create and distribute the pre-configured programs
- ❖ The number of configurations is unlimited
- ❖ The Seed (communication client) is not subject to license)

